



上海曹欣仪器仪表有限公司
SHANGHAI CAO XIN INSTRUMENTATION CO.,LTD.



您的满意，我们的追求！

LZ 金属管浮子流量计

Model LZ Rotor Flowmeter

LZ 型金属管浮子流量计适用于测量封闭管道中流动的液体、气体的体积流量,有机械现场指示、4~20mA 输出可供选择。它广泛用于石油、化工、医药、冶金等领域的控制系统。

Model LZ rotor flowmeter is suitable to measurement of volume flow rate of flowing liquid, gas in enclosed type piping. It has field mechanical director, 4~20mA output for choice. It is broadly applied to the control system in the fields of petroleum, chemical, medicine and metallurgical.



主要特点 Feature

- 通用性好 液体、气体和蒸汽均可测量
- 低流速 流量小仍有较好的灵敏度
- 读数直观 指针开面大, 读数清晰
- 输出 4~20mA(二线制), 适用于控制

● 主要技术指标 Specification

型号 Model	流量上限值 Upper Flow (m ³ /h)		范围度 Span	基本 误差 Error (±%)	工作压力 Pressure (MPa)
	20℃ (水) (Water)	20℃ (空气) (Air)			
LZZ-15 LZD-15	0.025	0.7	10	1.5 ~ 2.5	常规 <1.6 >1.6时特 殊订货
	0.04	1.1			
	0.06	1.8			
	0.1	2.8			
	0.16	4			
	0.25	7			
	0.4	10			
LZZ-25 LZD-25	0.6	16			
	1	30			
	1.6	45			
	2.5	70			
LZZ-40 LZD-40	4	110			
	6	160			
LZZ-50 LZD-50	10	250			
	16	400			
LZZ-80 LZD-80	25	750			
	40	750			
LZZ-100 LZD-100	60	1800			
	60	2500			
LZZ-150 LZD-150	160	4000			

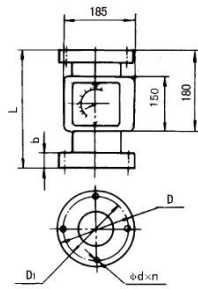
注: LZD带 4~20mA 模拟输出

● 外形和连接尺寸 Outline and Connection

- **Good versatility:** can measure liquid, gas and vapor.
- **Low flow rate:** small flow quantity but better sensitivity.
- **Direct reading:** big dial plate, clear reading.
- **Output** 4-20mA(two wire system), suitable to control.

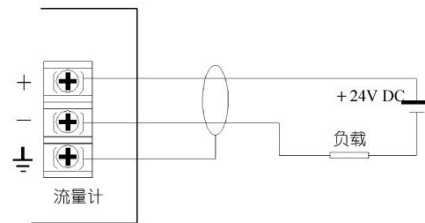
- 流体温度 -80~120℃ (>120℃特殊订货)
- 环境温度 -20~50℃
- 相对湿度 ≤80%
- 工作压力 1.6MPa(>1.6Mpa 时特殊订货)
- 输出电流 4~20mA(二线制)
- 防爆等级 本安型 Ex ib II CT4
- 压力损失 6.5kPa~38.2kPa
- 电源电压 24V DC±4.8V DC
- 传输距离 1km(金属屏蔽电缆)
导线电阻不大于 100Ω

- **Flow temperature:** -80-120℃ (>120℃ for special order)
- **Ambient temperature:** -20-50℃
- **Relative humidity:** ≤80%
- **Working pressure:** 1.6MPa(>1.6 for special order)
- **Output current:** 4-20mA (two wire system)
- Explode-proof: Ex ib II CT4
- **Pressure loss:** 6.5kPa-38.2kPa
- **Supply voltage:** 24VDC±4.8VDC
- **Transmission distance:** 1km(cable with metallic shield). Conductor resistance is less than 100Ω



通径 DN(mm)	L (mm)	B (mm)	D (mm)	D1 (mm)	φ d × n (mm × Pcs)
15	250	14	95	65	14 × 4
25	250	18	115	85	14 × 4
40	250	20	145	110	18 × 4
50	250	22	160	125	18 × 4
80	250	24	195	160	18 × 8
100	250	26	215	180	18 × 8
150	250	28	280	240	23 × 8

● 输出 Output
4~20mA 模拟输出 Analog Output



流量传感器



地址:上海松江区文诚路358弄6号

Add: #6, &358, WenCheng Road, Songjiang, Shanghai, China

邮编P. C: 201620

电话TEL: +86 (021) 37012002 (总机), +86 (021) 37012001, +86 (021) 57680235

传真 FAX: +86 (21) 37012002 -8008

WEB: www.flowmeter-sensor.com

E-mail: shcxsale@126.com